

MONTHLY MEMBERSHIP PROGRESS REPORT

LOCATION INDIA

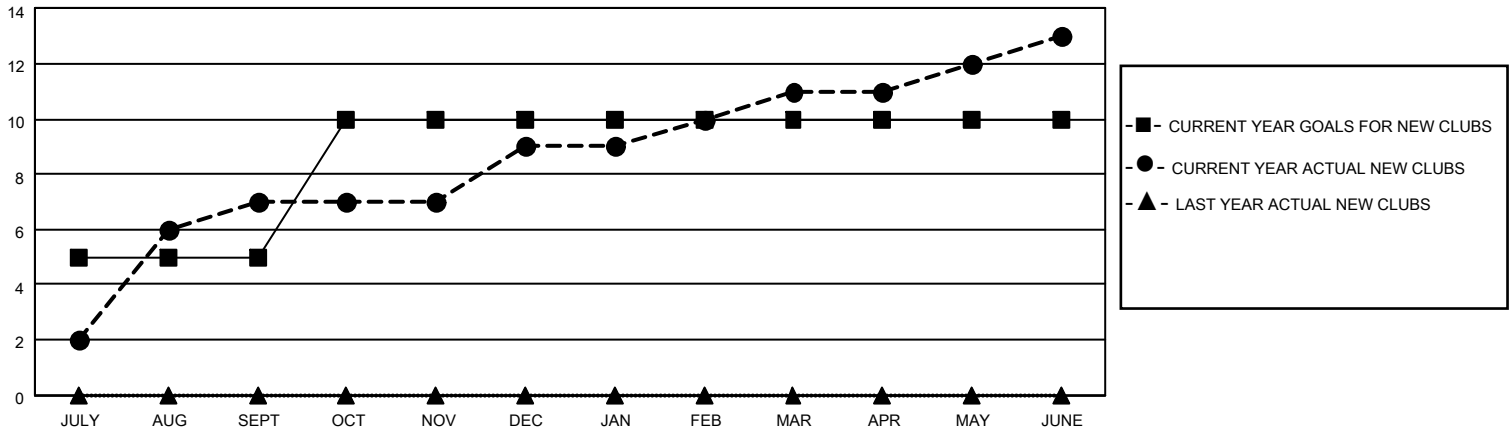
District 324 H

Results as of: 6/30/2022

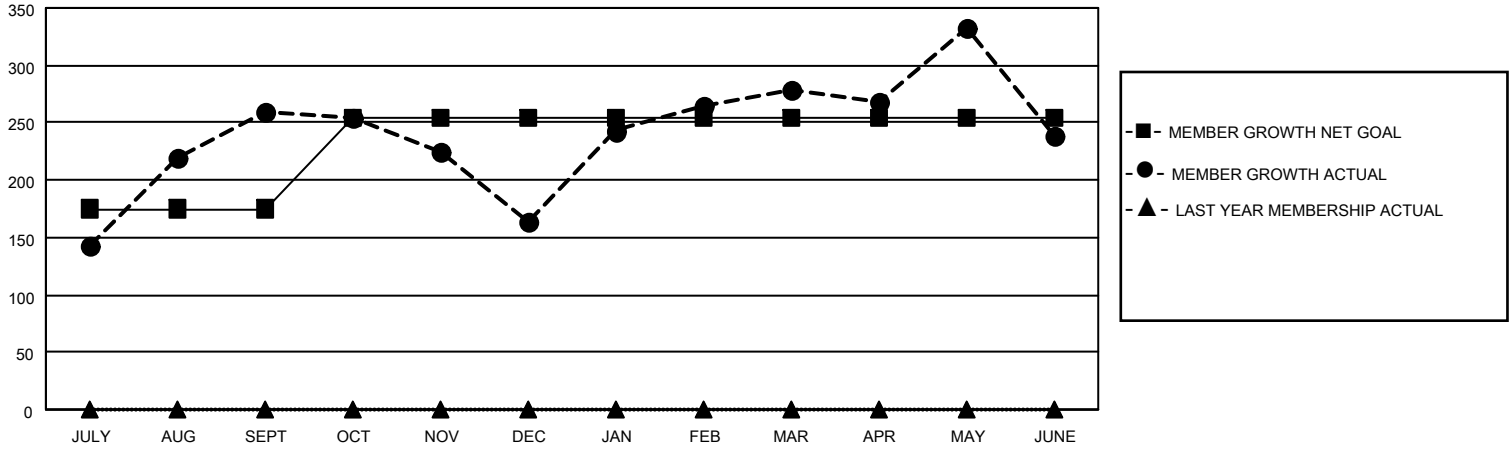
Clubs			
RESULTS FOR 2021-2022			
QUARTER	NEW CLUB GOAL	NEW CLUBS	DROPPED CLUBS
JULY/AUG/SEPT	5	7	2
OCT/NOV/DEC	5	2	1
JAN/FEB/MAR	0	2	1
APR/MAY/JUNE	0	2	2

Members			
RESULTS FOR 2021-2022			
QUARTER	MEMBER GROWTH NET GOAL	MEMBER GROWTH ACTUAL	DROPPED MEMBERS ACTUAL (including transfers)
JULY/AUG/SEPT	175	434	163
OCT/NOV/DEC	80	79	174
JAN/FEB/MAR	0	196	71
APR/MAY/JUNE	0	332	335

GOALS AND ACTUAL NEW CLUBS CUMULATIVE



GOALS AND ACTUAL MEMBERS CUMULATIVE



DROPPED CLUBS: 6

86 CLUBS OF 95 ADDED 1 OR MORE NEW MEMBERS

GENDER DISTRIBUTION

MALE	2,730 (86.07%)
FEMALE	442 (13.93%)
NON BINARY	0 (0.00%)
PREFER NOT TO ANSWER	0 (0.00%)

DROPPED MEMBERS

[CLICK HERE FOR CUMULATIVE MEMBERSHIP DATA](#)

DECEASED	11
CLUB CANCELLED	147
OTHER	585
TOTAL	743

TOTAL FAMILY UNIT MEMBERS	804
FAMILY MEMBERS PAYING HALF DUES	473